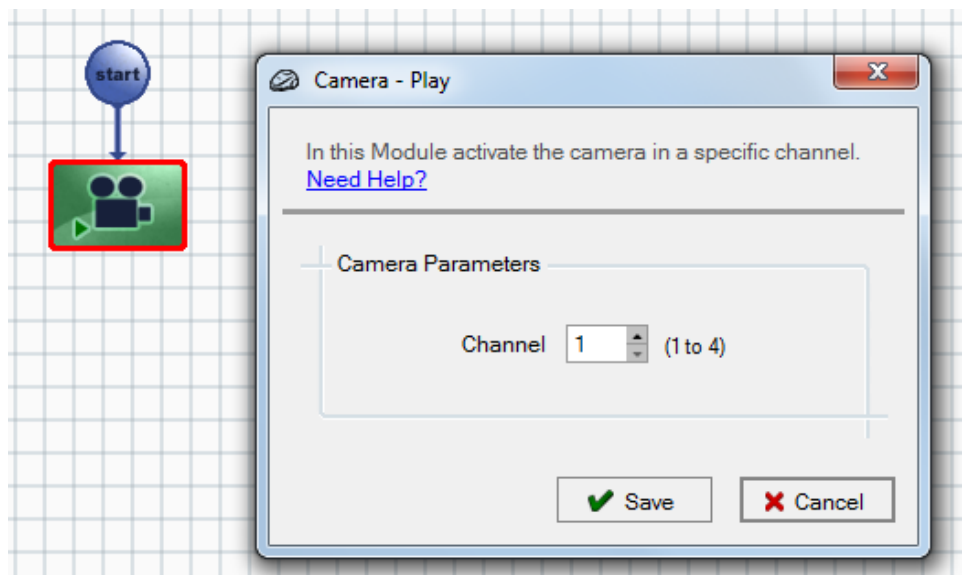


## MOWAYWORLD PRACTICE: CAMERA

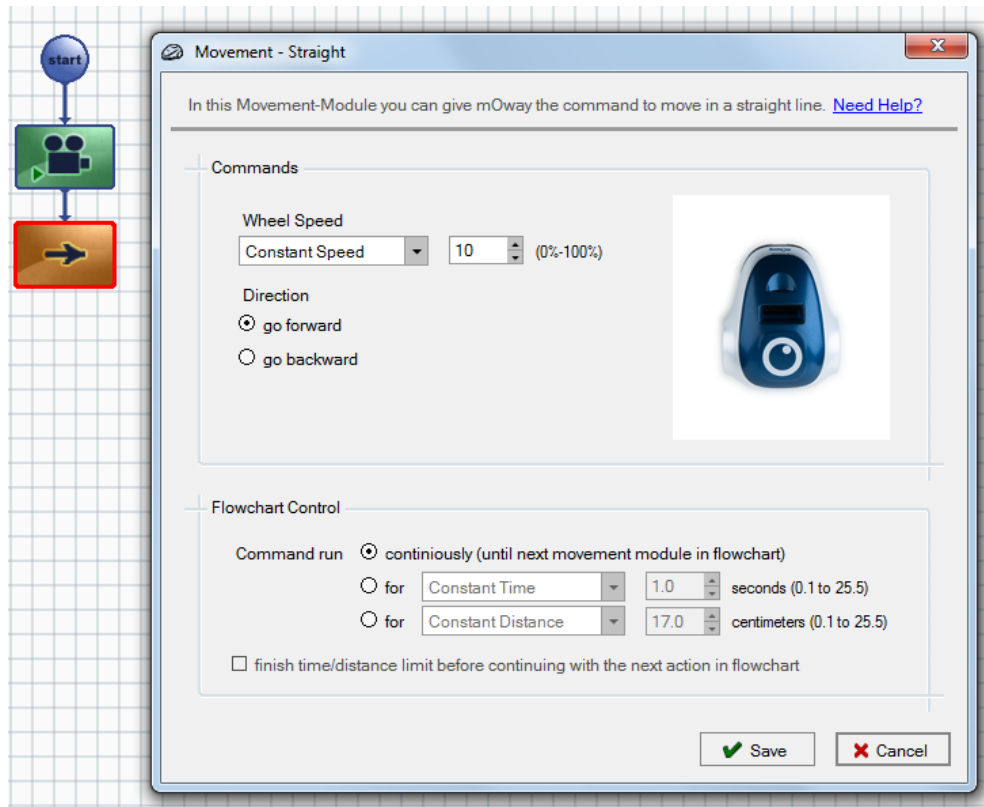
In this exercise Moway robot will go straight forward with the camera activated. When it detects an obstacle, Moway will rotate 90 degrees and then it will continue straight.



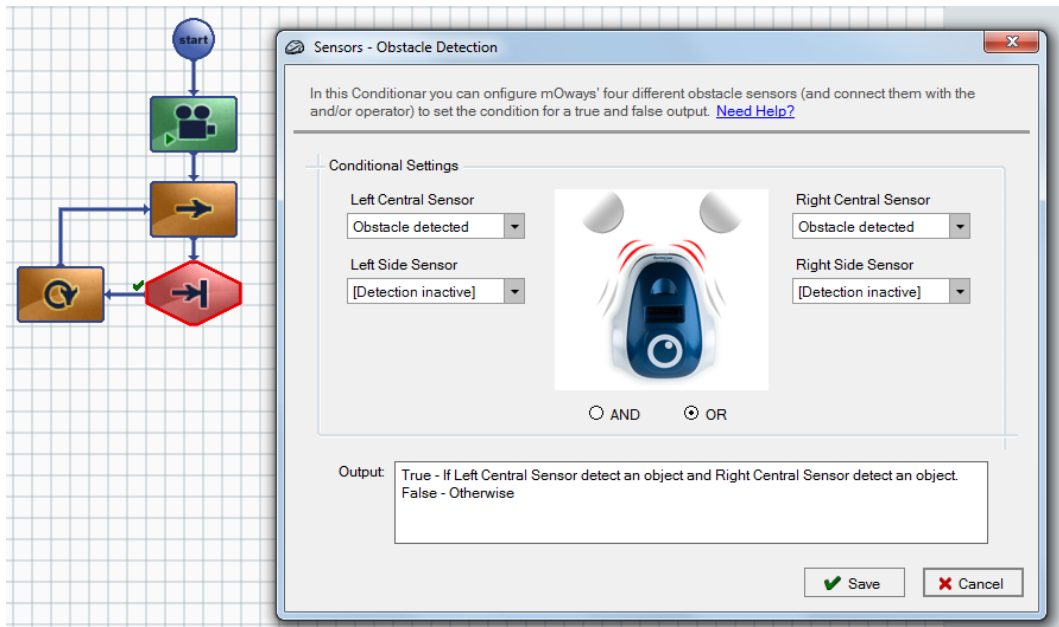
Firstly the camera is activated and configured to transmit on channel 1 (the channel of the “Moway Camera Board” receptor must be the same of the camera).

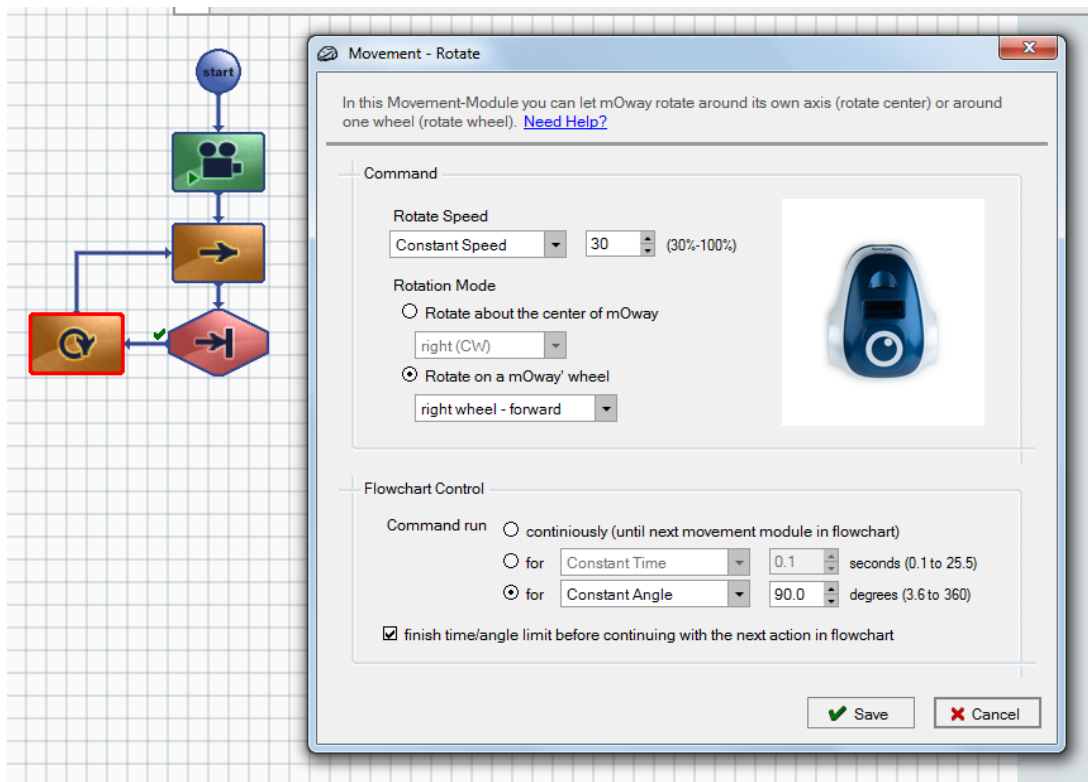


Once the camera is activated, Moway will go straight forward until it detects an obstacle.

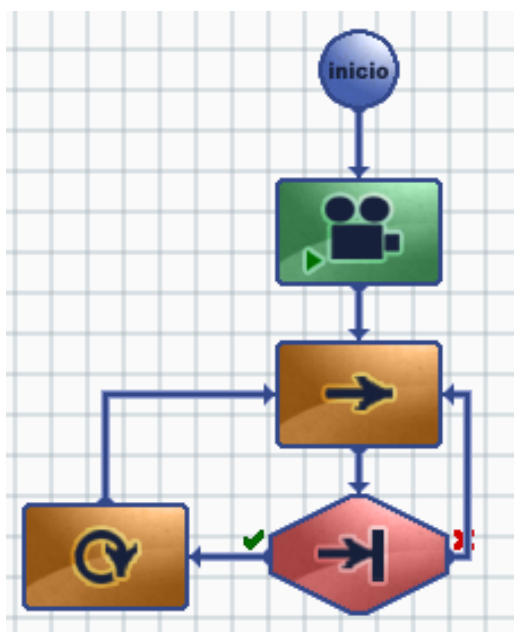


When the obstacle is detected with the central obstacle sensors, Moway will rotate 90 degrees to avoid crashing against it. Then it will continue with a straight movement.



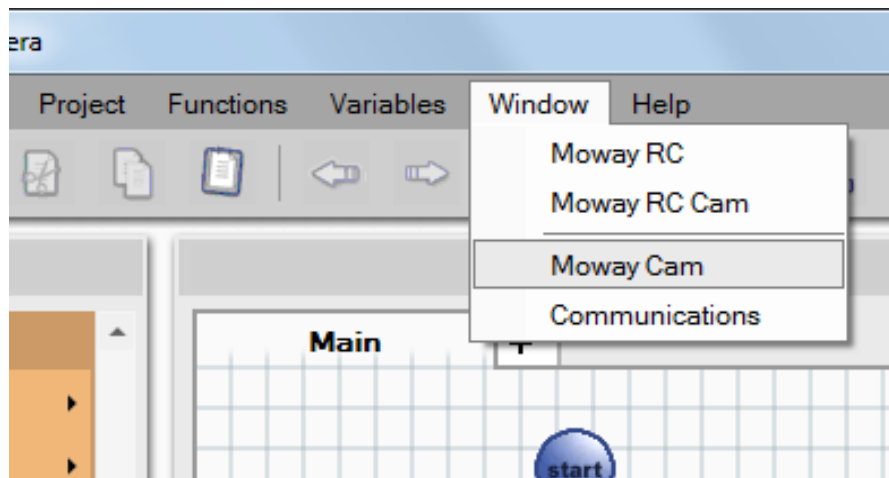


If no obstacle is detected, Moway simply goes straight. The final diagram is shown below.

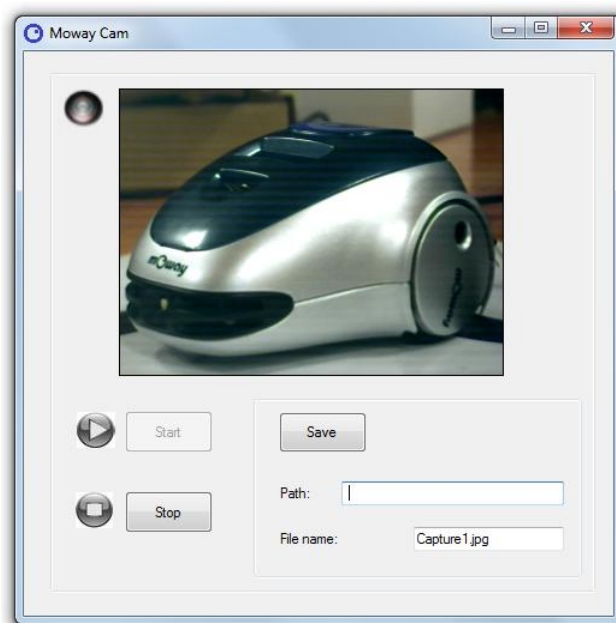


In order to watch camera images, it is necessary to connect the “Moway Camera Board” receptor to PC. If it is the first time this device is connected to PC, the driver installation will start automatically. The “Install software automatically” option must be selected. If a message appears during installation, select “Continue with the installation” option.

Once the capturer has been detected by PC, the “MowayCam” application is launched from MowayWorld toolbar (Window – MowayCam).



When the “Start” button is pressed, the video receptor begins to capture images. A steady image can be saved on the specified path and name, pressing the “Save” button.



NOTE: Both camera and video receptor must be on the same channel.

NOTE: Other wireless transmitters can affect the images quality. If so, change the channel of transmission (both camera and video receptor).

NOTE: When the video receptor is activated, DO NOT DISCONNECT IT FROM PC. Some operative systems will restart the PC.