



Robonova Bluetooth Module

check inside

- bluetooth module
- CD
- usb cable
- manual
- antenna

PC minimum requirement

- operating system : windows Xp or 2000
- cpu : pentium 3, 500Mhz
- System Memory(RAM) : 256 MB
- Hard Disk : 40MB free space

Bluetooth Module specification

- Description :
Board-type wireless serial adapter with MMCX antenna connector

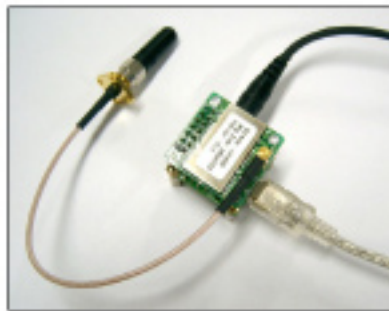
- Power Class : Class1
- RF Range : Up to 100m
- Power Connector : Header 2.54m
- Power supply : 3.3V
- Serial Interface : UART
- Applicable Antenna :
Stub Antenna,
Dipole Antenna,
Patch Antenna,

- Bluetooth Qualified : Fully
- Type Approved : FCC, CE
- Dimensions (H x W x D) : 27x27x14 mm
- Includes Stub Antenna, Antenna Cable (15cm)
- Default bandwidth : 4800 bps

Submodule Specification

- Dimensions (H x W) : 26 x 27 mm
- Serial I/F Cable Connector
- USB Power Cable Connector
- RX/TX Port Connector

1. Module Connection



Antenna



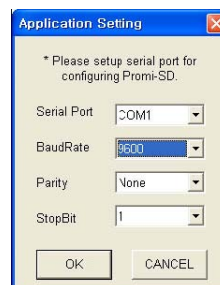
robonova serial interface cable
- not included -



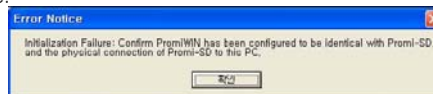
rmini USB cable

2. Modul configuration

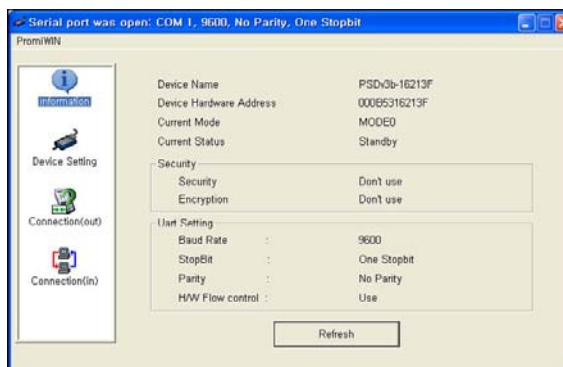
- please install Promi-ESD_Setup(En).exe on your PC
- run PromiWin
- set the baudrate and port.



- Default is on 4800 bps. If this setting does not match, then you will see this error message.

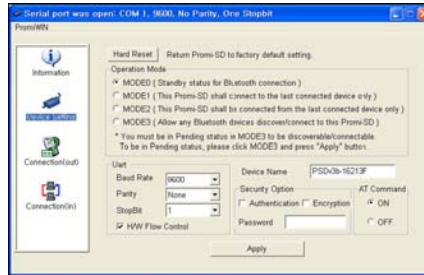


- check the connection status.

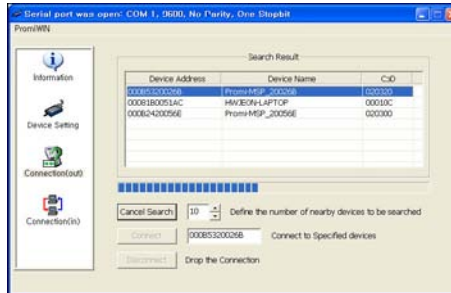


Robonova Bluetooth Module

- device setting from mode 0 to 3.

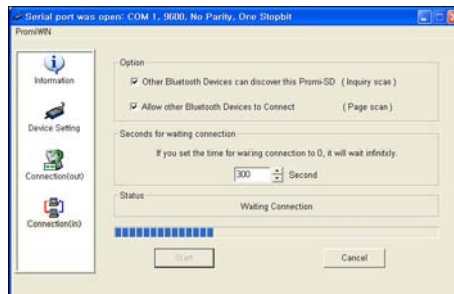


- search other bluetooth devices from connection(out).



Click Search button to search nearby Bluetooth devices.

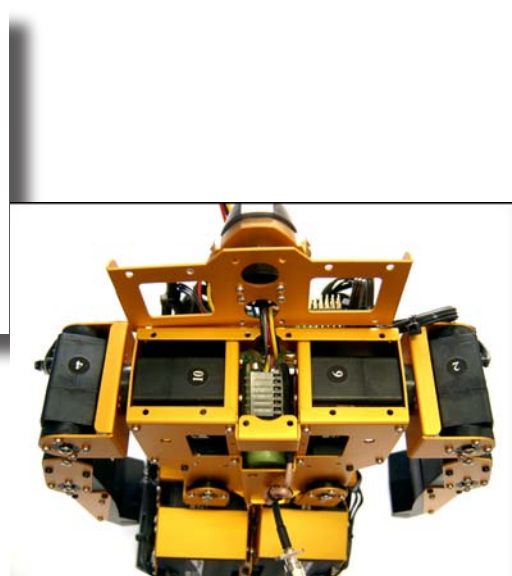
- check the incoming connection



- Please check the Promi-ESD-Usermanual_V2.0.pdf on CD for detailed information.

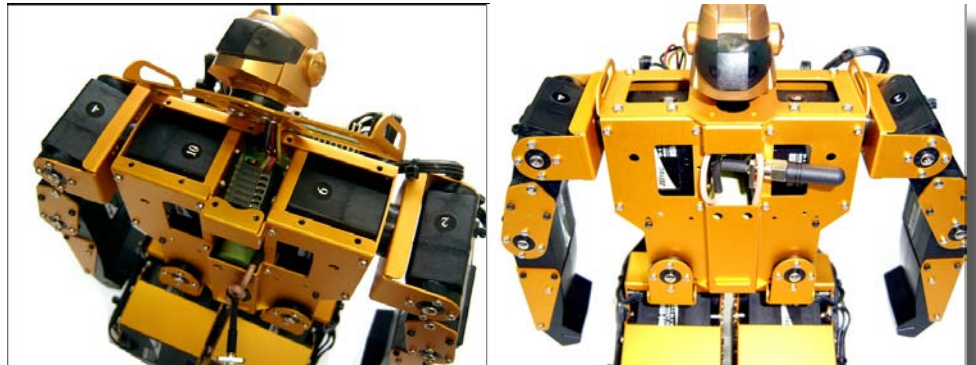
3. Assembly example.

- unscrew the head and shoulder part.



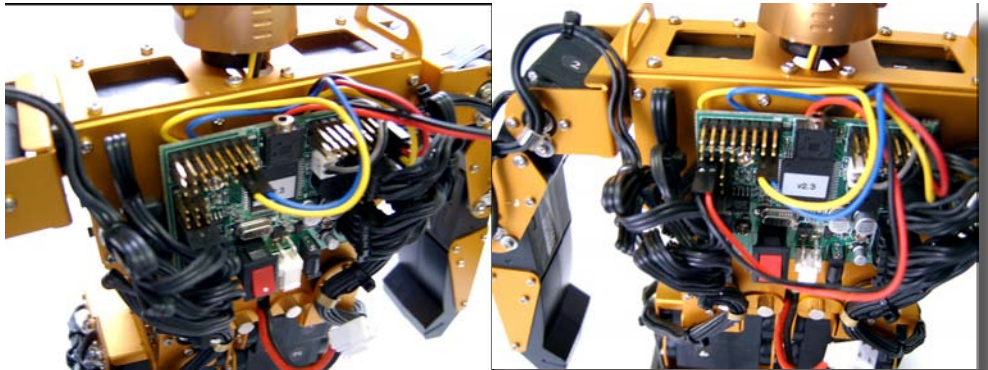
Robonova Bluetooth Module

- insert Bluetooth module and put the antenna on the position



- now connect the wire to robot controller.

WARNING
 red wire is for 5V power supply.
 please connect !only! on 5V power pin.

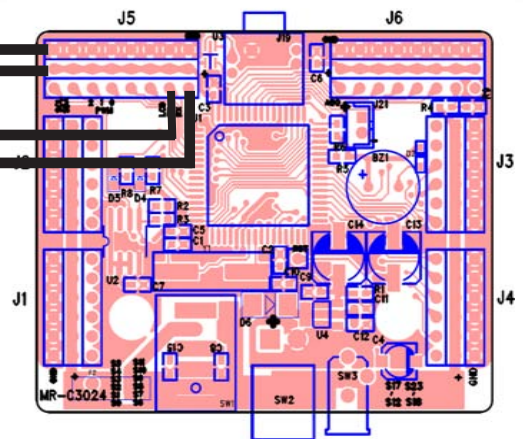


- connect the wire and pins, as described.

WARNING
 red wire is for 5V power supply.
 please connect !only! on 5V power pin.

2.3 or earlier version robonova controller
 can have different ETX/ERX allocation.
 Please check your controller version and
 contact our support.

Bluetooth	
Module	3024(v2.5)
black	GND
red	5V
yellow	ERX
blue	ETX



- Use Robobasic ETX and ERX commands.
 For Detail, please refer robobasic manual.

ERX 4800,A, INIT1
 ETX 4800